



Earth fiber®



EARTH FIBER CRACK SHIELD AR GLASS FIBER PRODUCT DATA SHEET



Earth Fiber crack shield Alkali Resistant (AR) Glass Fibers are designed specifically for use in concrete. They are manufactured from a specially formulated glass composition with an optimum level of Zirconia to be suitable for use in concrete. concrete reinforcement applications. They enhance tensile strength and modulus, do not rust like steel, and are easily incorporated into concrete mixes. Earth Fiber crack shield AR Glass Fibers is suited for the preparation of pre-bagged mixes of repair and top screed mortars. The product Also may be used in the manufacture of glass fiber reinforced concrete (GRC) composites by both premix and simultaneous spray methods.

Why Earth Fibrex :

- 1. Best Quality at Competitive Prices:** Our Material are known for their superior quality providing reliable and long-lasting reinforcement all at competitive prices
- 2. Extensive Products Range:** we offer a wide range of product options to cater to different concrete strengthen needs ensuring the perfect solution for your project
- 3. Capacity To Serve At Volumes:** our robust capacity allows us to efficiently meet the demands of projects of all sizes ensuring timely delivery
- 4. Commitment To Integrity And Trust:** we prioritize maintaining strong relationships with our customers by operating with integrity and building trust
- 5. ISO and CE Certification:** our products are ISO and CE certified guaranteeing their compliance with international standards of quality and safety

Fiber Specifications :

- Fiber length : 3mm, 6mm, 12mm & 24mm
- Diameter : 12 - 18 microns
- Alkali Resistance : Excellent
- Corrosion Resistance : Excellent
- Moisture Content : < 0.5%
- Standard Packaging : 900gm, 1 KG Pack & 25kg Bag.

Benefits of Earth Fiber Crack Shield Glass Fiber :

- **Crack Resistance:** Prevents shrinkage and stress-related cracking.
- **High Tensile Strength:** Improves structural integrity under stress.
- **Corrosion Resistance:** Extends lifespan in harsh environments.
- **Lightweight:** Easier to handle and apply than traditional materials.
- **Non-Conductive:** Provides electrical insulation.
- **Thermal Resistance:** Maintains properties at high temperatures.
- **Cost-Effective:** Reduces long-term maintenance costs.
- **Improved Flexibility:** Allows for flexible and complex designs.
- **Environmentally Friendly:** Reduces material waste and energy use.
- **Enhanced Aesthetic Qualities:** Offers a smooth, appealing finish.

STORAGE :

Unless otherwise specified, it is recommended to store material in a cool, dry area. Fiber must remain in packaging material prior to its use.

INSTALLATION PROCEDURE :

SPRAYED FRC

Preparing by spray process simultaneous sprays of cement / sand mortar slurry and chopped AR glass fiber are deposited from a spray – head into or on a suitable mold. The spray head may be hand held or mounted on a machine. The recommended dosage in sprayed GRC is 5% by weight (1 – 2.7/kg Cubic meter) or as stated in design.

PRI-MIXED FRC

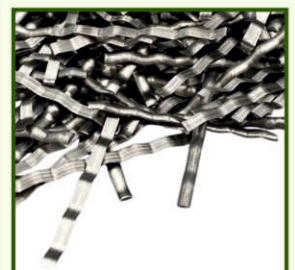
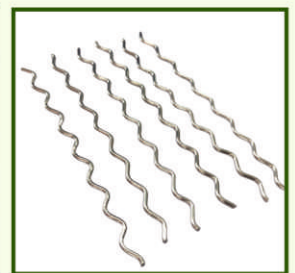
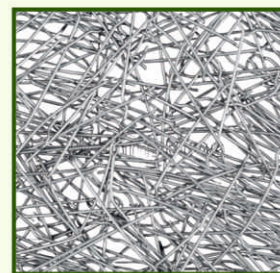
All premix processes involve the blending together of the cement, sand, water, admixtures and glass fiber in a mixer prior to being formed. To produce a premix of the correct quality it is necessary to mix in two stages. The first stage is designed to produce high quality slurry to achieve the necessary workability and allow uniform incorporation of fiber. The second stage is the blending of fibers into the slurry. It is more convenient to carry out both stages in the same piece of equipment, but separate mixers can be used for each stage. The recommended dosage in premix GRC is 5% by weight (1 – 2.7/kg Cubic meter) or as stated in design.

CAUTION :

All components of Glass Fiber may cause skin irritation and sensitization. Use of chemical resistant gloves is recommended. Avoid breathing vapours and dust. Get medical attention if you are breathing with difficulty. Resins products can cause strong eye irritation. Avoiding eye contact and Using safety glasses is necessary.

OTHER STANDOUT REINFORCEMENT FIBERS FROM EARTH FIBER ARE:

- Loose Hooked End Steel Fiber
- Round Crimped Steel Fiber
- Glued Hooked End Steel Fiber
- Flat Crimped Steel Fiber
- SS & Micro Steel Fiber



EARTH FIBREX INFRA PVT. LTD.

EFIPL - Kh. 633 Killa - 141/2/2/4 Bhatgaon Dogran,
Sonipat Haryana - 131022

Contact: +91 9711151541, 9313251541

Website: www.earthfibrex.com

Mail: info@earthfibrex.com

[in](https://www.linkedin.com/company/earthfibrex) [@](https://www.instagram.com/earthfibrex) [earthfibrex.infra](https://www.instagram.com/earthfibrex)



ASTM INTERNATIONAL

Conforms to
ASTM A-820M 06



AN ISO
9001:2015
Certified Company